

1920x1080 WIFI Dual-lens DASH CAM D7 Instructions



Attention

- The device does not have a battery, Please connect the power supply.
- If the time of car DVR is wrong, connect the car DVR with your smart phone via Wi-Fi. Open the app, the time will update automatically, if not, you can set it by yourself.
- The quality of video shown in the app is not as good as the video on SD card, if you want to watch the 1920x1080 video, you have to unplug the SD card, then plug it to your smart phone or use a SD card reader to watch the videos on your computer.
- The car DVR need to plus a TF card (support Max 32G) to record.
- Hidden Non-destructive Installation Designed for the original car style, Do not block the line of sight, Take power from the fuse box, hidden the wires, Integration with the vehicle. It will work when you start your car and stop when you unplug your car key. No built-in lithium battery, avoid battery explosion risk.
- Loop recording, powerful IC, Loop recording, you can set the

video fragment as 1minute / 2 minutes / 3 minutes / 5 minutes / 10 minutes, overwrite the fragments recorded before, if the storage is full. Support 8G - 32G Micro SD card.

- Support iOS and Android APP manipulation. Built-in Wi-Fi module, Broadcom AP6181, you can watch the recorded videos, download the videos, share the videos from the DVR to your Android phone or iPhone, just via Wi-Fi, not waste your internet flow.
- Built-in G-Sensor, save the important video when crash, suddenly braking to a special folder to avoid it was overwrote.

Powerful function of Wi-Fi:

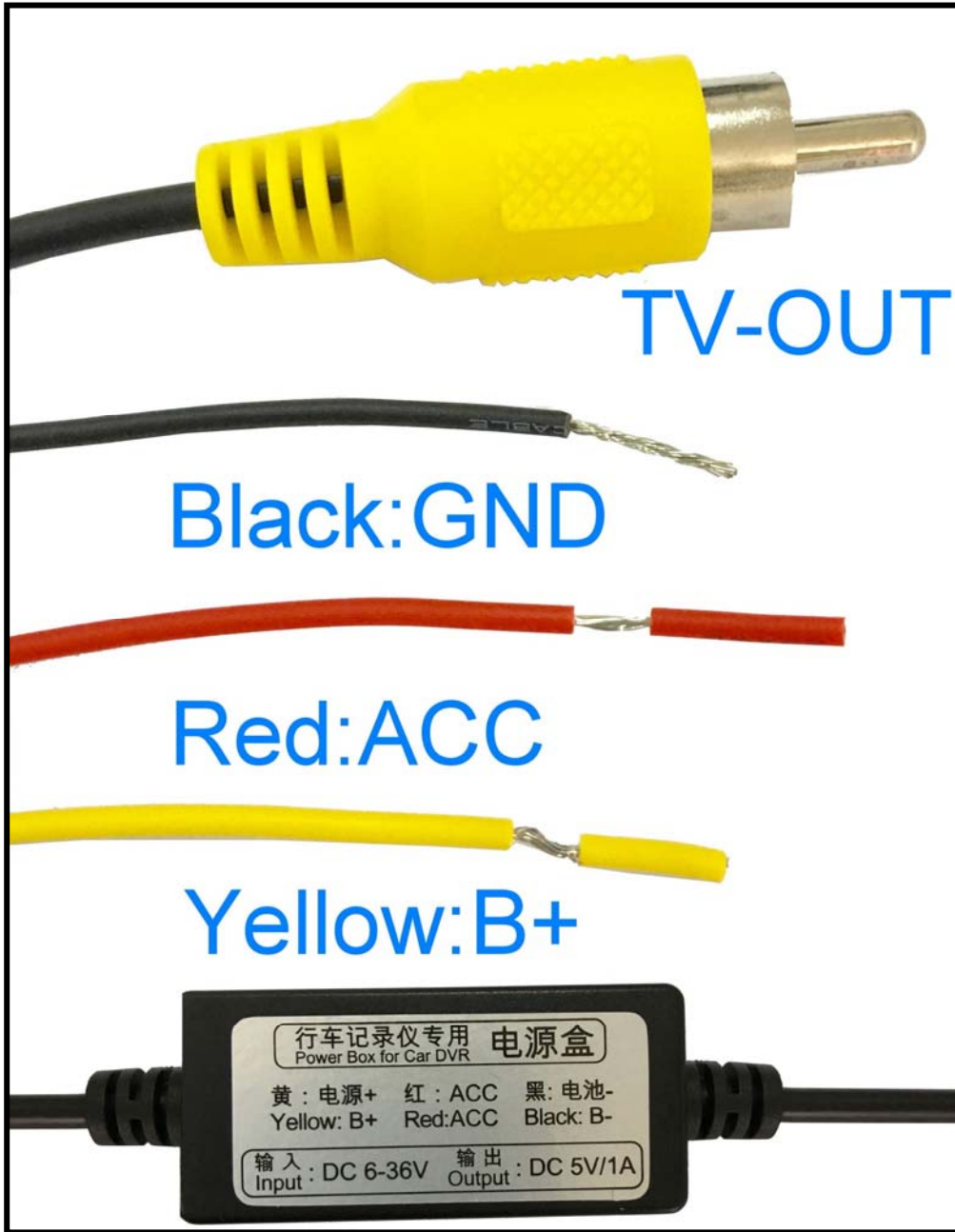
- Wi-Fi Processor TX 1057 & Wi-Fi Module Broadcom AP6181.
- The phone & tablet accept 1:1 screen resolution immediately transport form Wi-Fi.
- Don't require compression FPS.

Dash Cam Overview



- Disconnect the WIFI before using the button operate

Installation



About APP

Minimum System Requirement: Android 4.0 / iOS 6.0

D7 equips with basic settings and modes selection, you can add more functions through APP, below examples are based on iOS for your reference.



Searching and downloading "WCVR-Dual" from App Store or Google Play or Market scan below QR code to get "WCVR-Dual" APP.



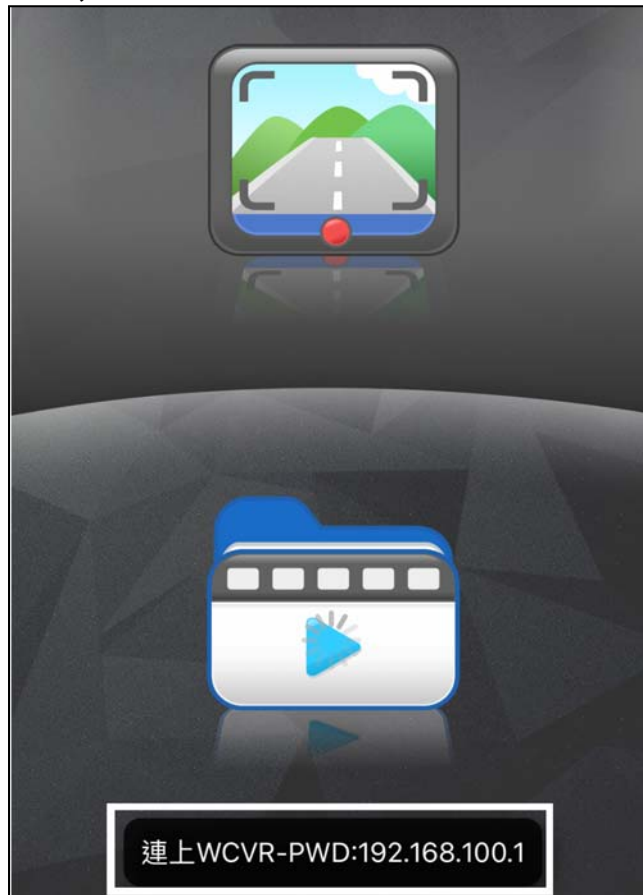
Connect Phone

- Turn on Wi-Fi on your phone, find and connect Wi-Fi “WCVR_XXXXXX”, when connected, just run “WCVR-Dual” software is ok.

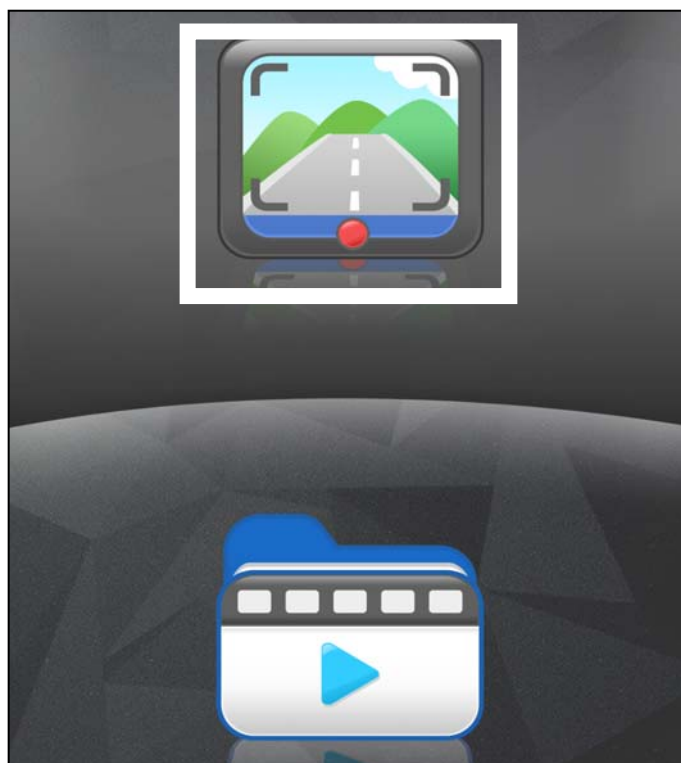
- When the mobile phone APP has been connected, but the screen has been unable to display, please refer to the following two ways to solve.
 1. Re-place the TF card to restart
 2. May have a strong WIFI signal interference, please try to change the location of re-connection

WCVR-Dual

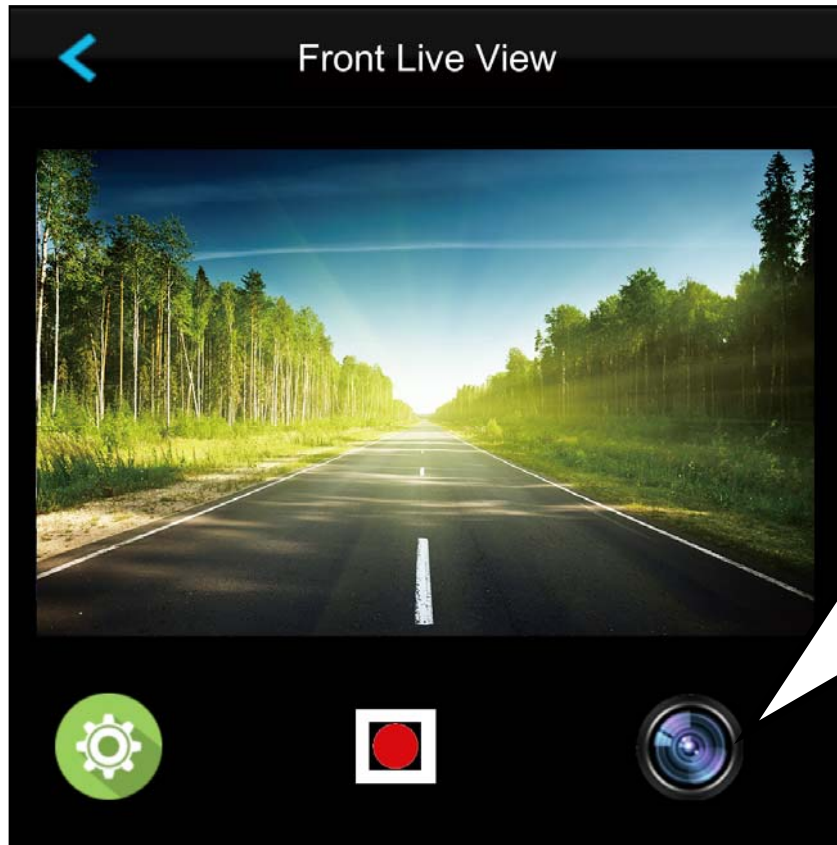
1. Enable Wi-Fi mode, the connection name will be shown.



Start Recording, the video will be saved in SD Card.

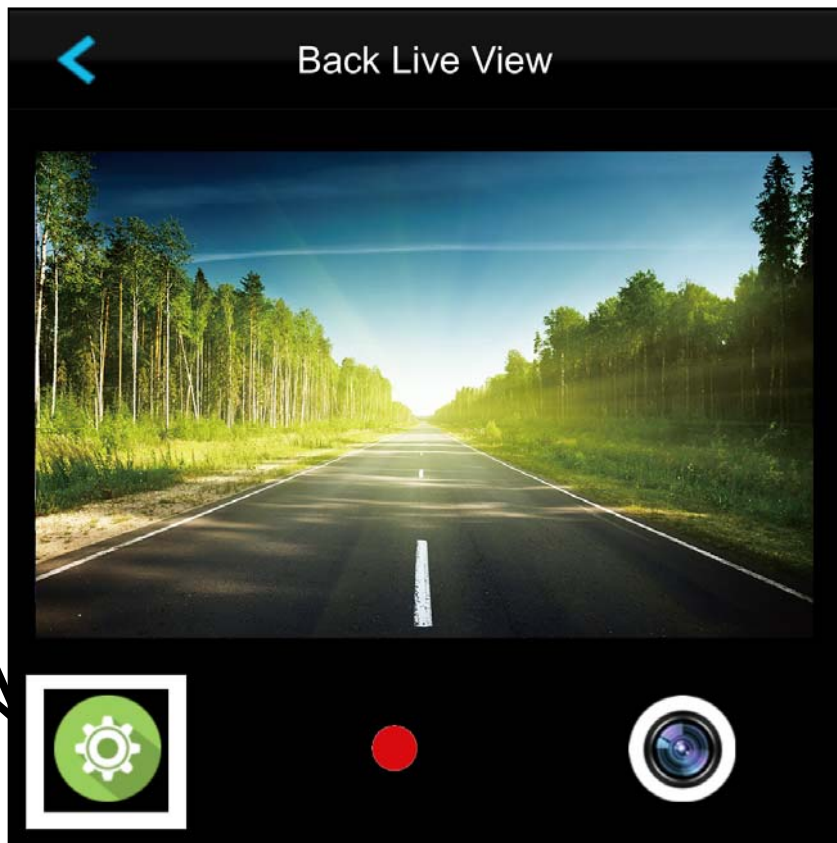


2. Start recording , Flashing red.



Click
Switch
Lens

3. Click to enter Setting Mode.



Click to
enter
Setting
Mode

4. Setting Mode

Settings		
Resolution	1080P	>
Time Display	On	>
Motion Detection	Off	>
Loop recording	10 Minutes	>
Record Audio	Off	>
Auto power off	3 Minutes	>
Frequency	60Hz	>
Exposure	+0.0	>
Park Mode	Not Support	>
Gsensor	Not Support	>
Set Time		>
Auto Set Time		>
Format		>
WiFiSettings		>

Settings	Resolution
1080P	(1920×1080) <input checked="" type="checkbox"/>
720P	(1280×720)
WVGA	(800×480)
VGA	(640×480)

Settings	Time Display
Off	
On	<input checked="" type="checkbox"/>

Recording time display
ON/OFF

Settings	Motion Detection
Off	<input checked="" type="checkbox"/>
On	

Motion Detector ON/OFF

Settings Loop recording

Off

1 Minutes

2 Minutes

3 Minutes

5 Minutes

10 Minutes ✓

How many minutes of Video

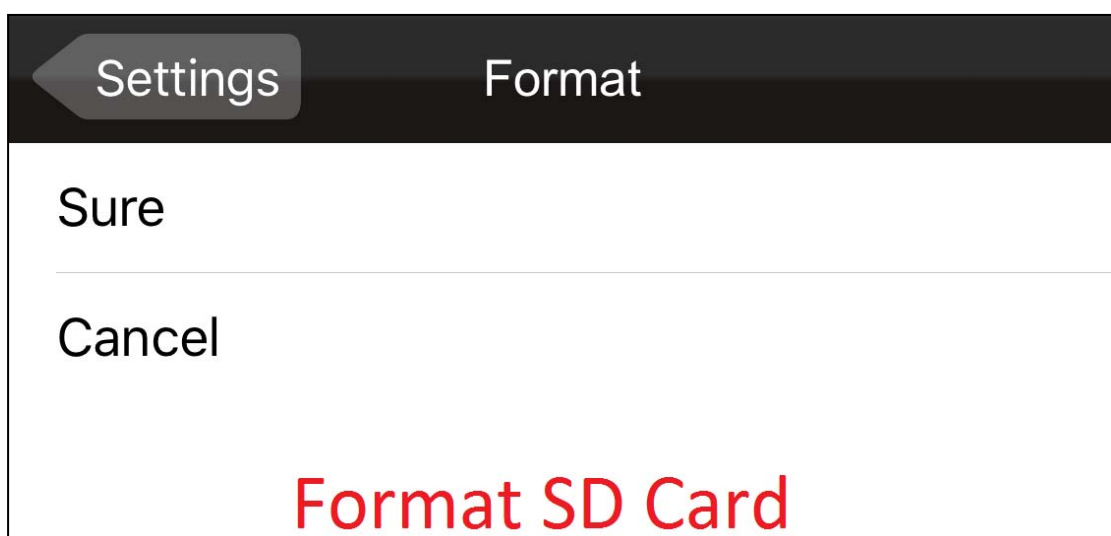
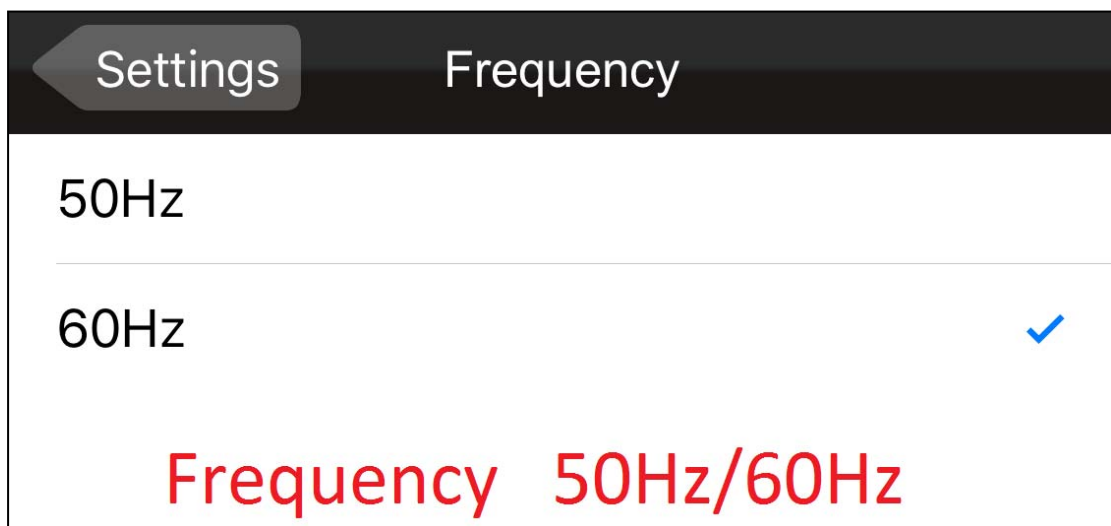
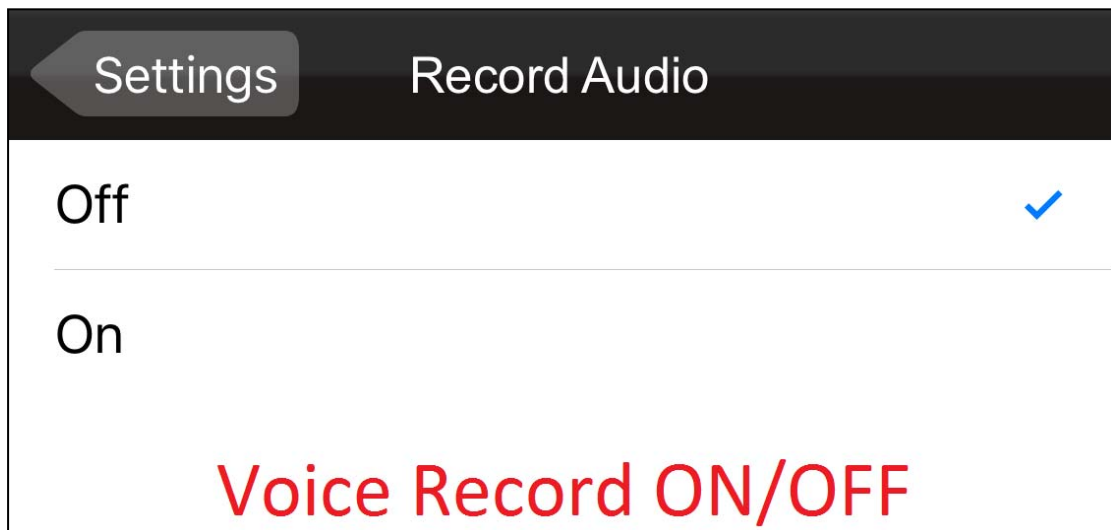
Settings Auto power off

Off

1 Minutes

3 Minutes ✓

Auto Power Off
OFF/ 1 Minutes/ 3 Minutes



Settings Exposure

+1/3

+0.0 ✓

-1/3

**Exposure compensation
(+2.0)~(-2.0)**

Settings Set Time Done

2015	5	23
2016	6	24
2017	7	25
10	34	56
11	35	57
12	36	58

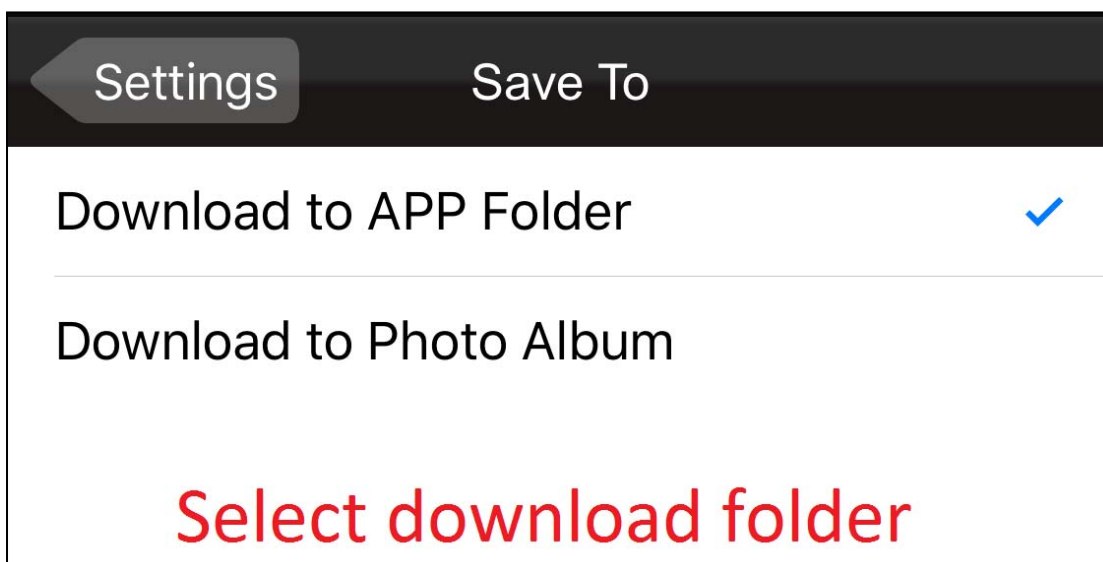
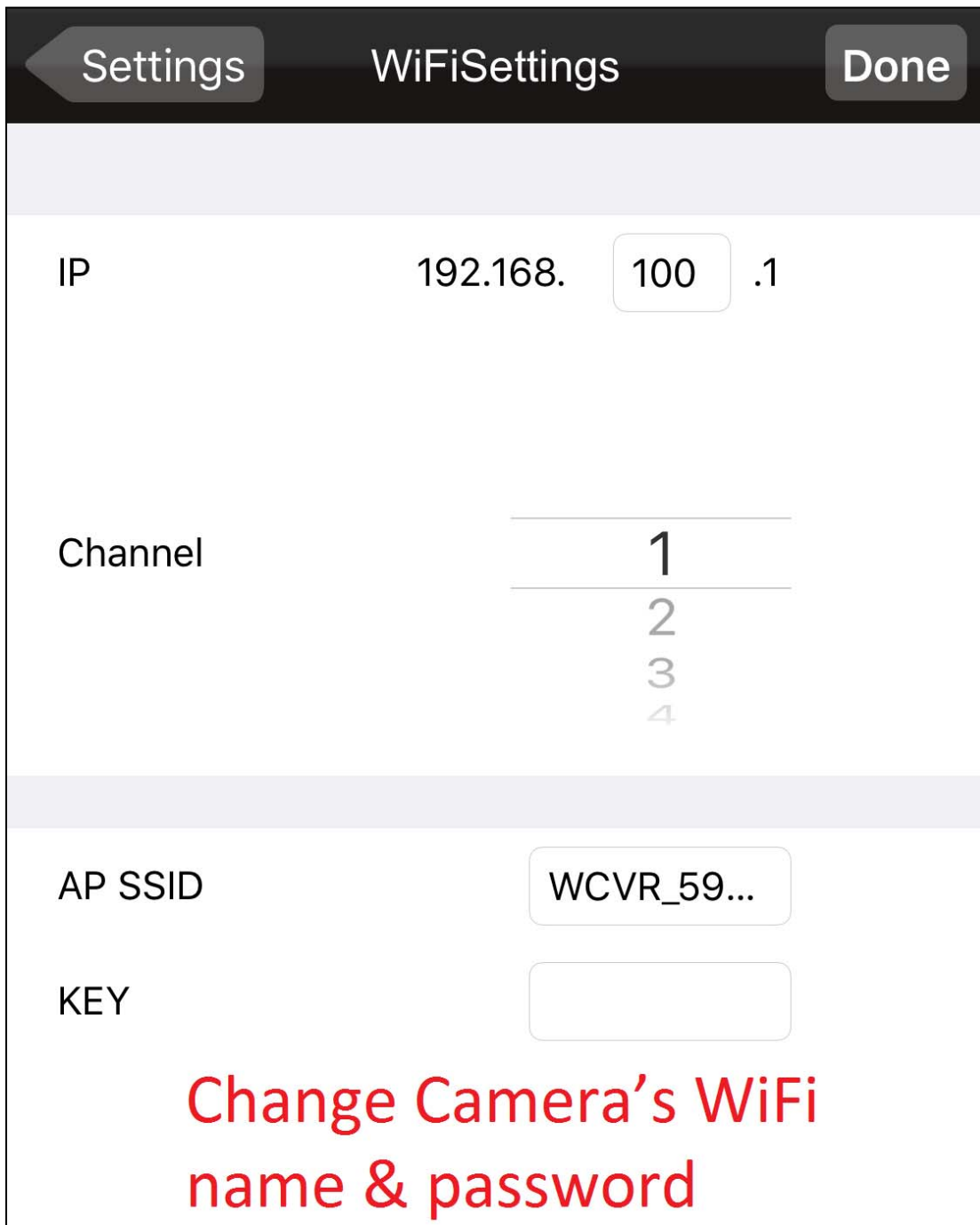
Manually update Date & Time

Settings Auto Set Time

Sure

Cancel

Automatic update Date & Time



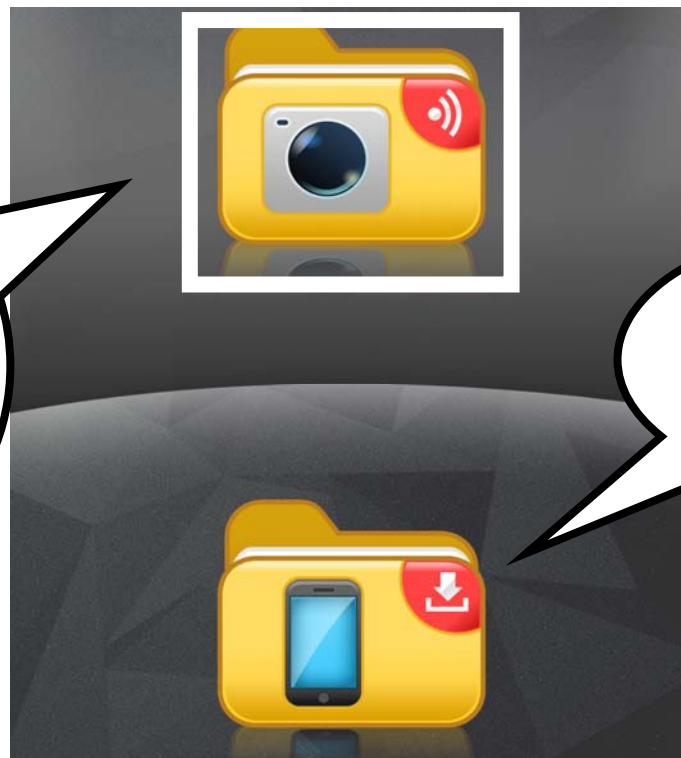
5. Recording mode & Preview mode



Press enter into recording mode.

Press enter into preview mode.

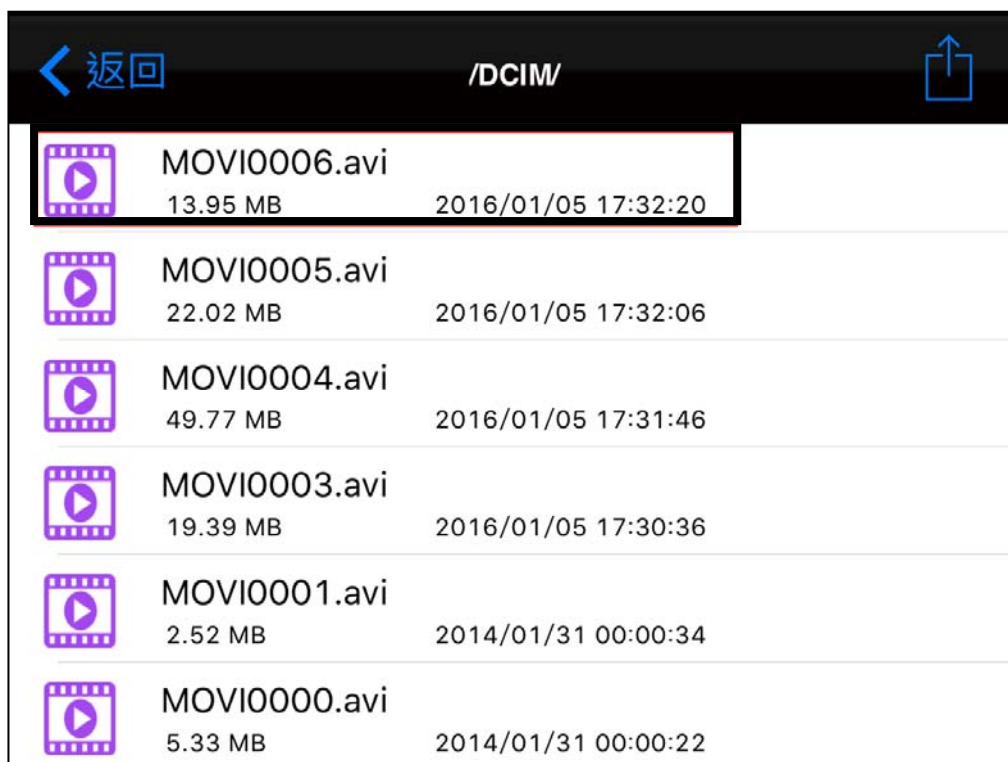
6. Preview mode



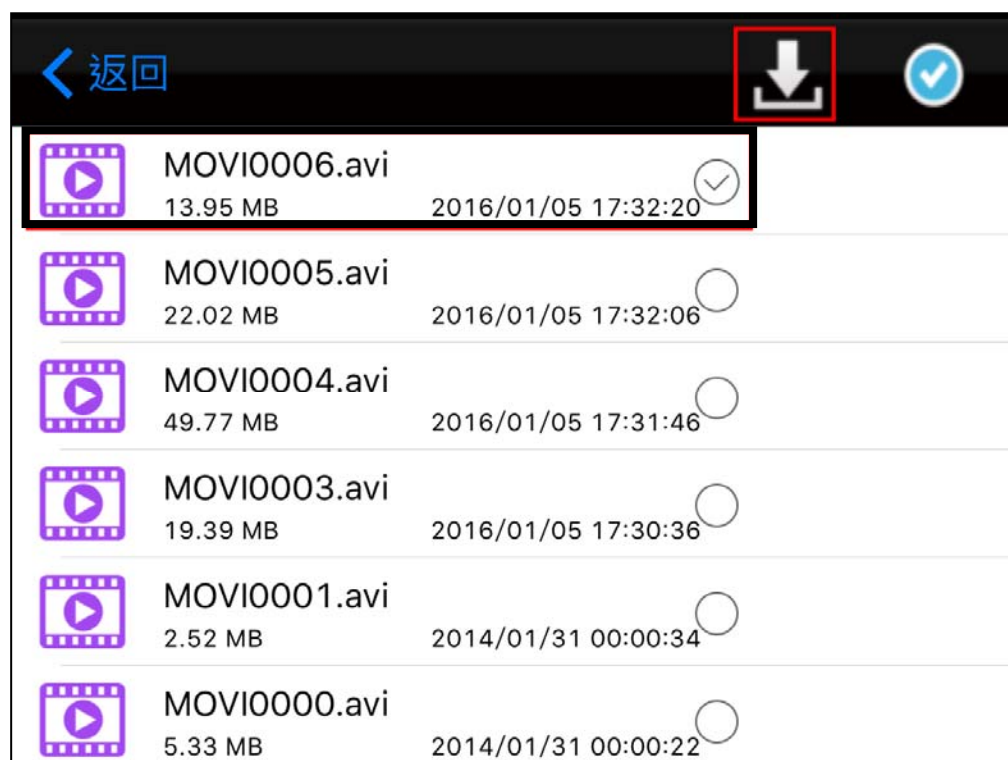
Click downloads the photo to the phone.

Press enter into preview mode.

7. Click downloads the photo to the phone.



7. Press to download which you want.



Trouble Shooting

Q1 : My D7 won't switch on when my car starts up.

A1 : 1. Please ensure the USB car charger LED is always lighted and the connector is properly inserted to D7 is power port.

Q2 : Slight vibration is observed when playing back recorded files.

A2 : 1. Your car may vibrate during idling and driving. The vibration amplitude varies with engine and shock absorbers. In certain cases, D7 may vibrate in sync with your car.

2. Tighten each screws of your D7. Consult your car supplier if the vibration is overly noticeable.

Q3 : Fuzzy images can be found in recorded files after proper installation.

A3: 1. Make sure the windshield/D7's lens is clear. Dirty or greasy window glass will lead to images of poor quality.

2. Improper installation location may lead to fuzzy images caused by too large bevel within the windshield.

Q4 : When playing recorded files with computer, there are noticeable halts observed.

A4 : 1. Make sure your computer is powerful enough for the playback.

The recommended computer configuration is CPU 2.0GHz with more than 1GB memory.

2. Try stop running some of your resident programs.

3. Please use SD card of level C10 or higher.

4. Try copying your recorded files to the computer before playing them.

Package Contents

To check the items in your package with the list below, If any of the below items is damaged or missing, contact your retailer.



Features	
Lens and aperture	Fixed focus 2 meters, 4 glass lenses. F2.4
Image sensor	Illumination 1/4" HD CMOS sensor (made in China)
Viewing angle	Wide-angle 130 degrees
Video resolution settings	Front camera: 720p : 1280 x 720@25fps , 1080p :1920 x 1080@25fps(interpolation)
	Backend the lens is 4 glass lenses: GA 640x480 @ 25fps
Operation Display	No screen, use the car DVD navigation screen, can be connected via WIFI phones and tablets
Video Output	By car DVD AV IN / AUX channel input
Monitoring methods	Motion detection, auto start recording, shut down automatically save
Loop recording	Cycle time is adjustable, automatic loop recording does not leak seconds
Night photography	Support low-light photography
Exposure Compensation	Adjustable

White Balance	automatic
WIFI Specifications	2.4Ghz ,(802.11 a, 802.11b , 802.11g)
WIFI effective distance	5 meters
WIFI security	you may change the account password yourself
Video wireless transmission	Video files can be uploaded directly to your phone
Memory card	Memory Stick Micro™ (Mark 2) 或 Micro SD/SDHC (class6 above) Max 32GB
Operating temperature	-20~70°C
Dynamic Sensor	G-sensor
Power supply	12V battery buck (INPUT: 12V-24V; OUTPUT: DC5V / 1A)
Accessories	12V battery buck line / User's Guide
LED lights	Two-color status indicator (blue: Power / Red: recording)
Remark	For more product details and APP function updates contact our personnel, without notice